

The Value of WEST

WEST leverages collaborative action for the collective good, preserving print journals and serials across the western region of the US to support the library and scholarly communities' current and future teaching, learning, and research needs.

<https://cdlib.org/west>

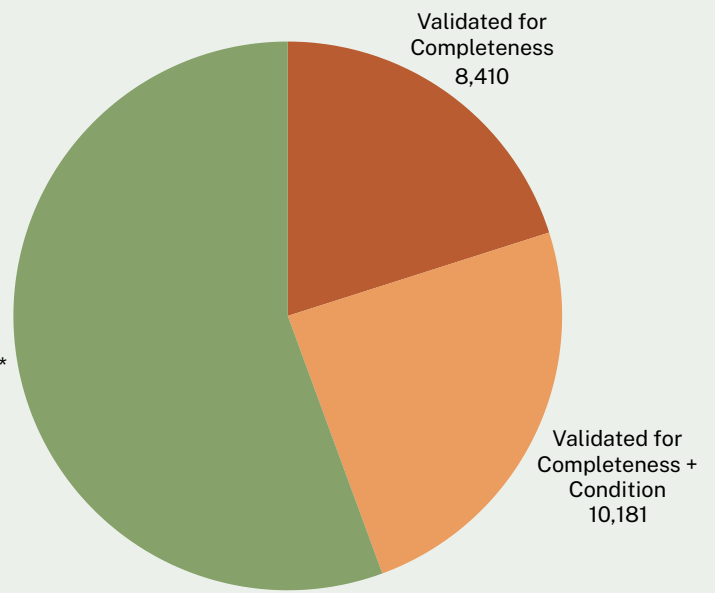
Preservation



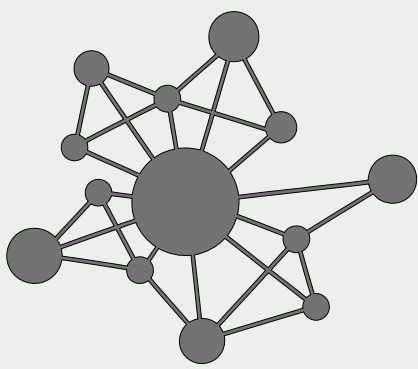
WEST's collection model allows members to retain materials according to local needs. Institutions can choose to participate by engaging in quick, low-effort archiving, undertaking more time-intensive higher-effort archiving, or contributing materials to complete retained backfiles. **Together, WEST members are protecting over 940,000 volumes across nearly 41,000 holdings, ensuring they're available into the future.**

WEST Archived Titles

- Validated for Completeness
- Validated for Completeness + Condition
- Not Validated*



*Journals that are digitally preserved are considered low-risk and are not required to be physically validated.



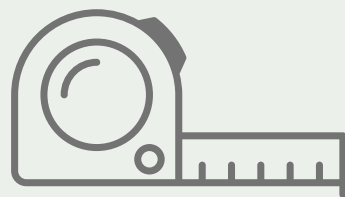
Access

The WEST collections are only useful if they are usable. WEST maintains an OCLC Profiled Group and a RapidILL pod to help **connect members to the WEST archives**, and provides national leadership promoting **better discovery of shared print across institutions**. WEST is dedicated to partnering with peers and advocating with OCLC and other service providers to build **comprehensive registries** and develop **solutions to support cross-institutional discovery of shared collections**.

[Libraries worldwide that own item:](#)

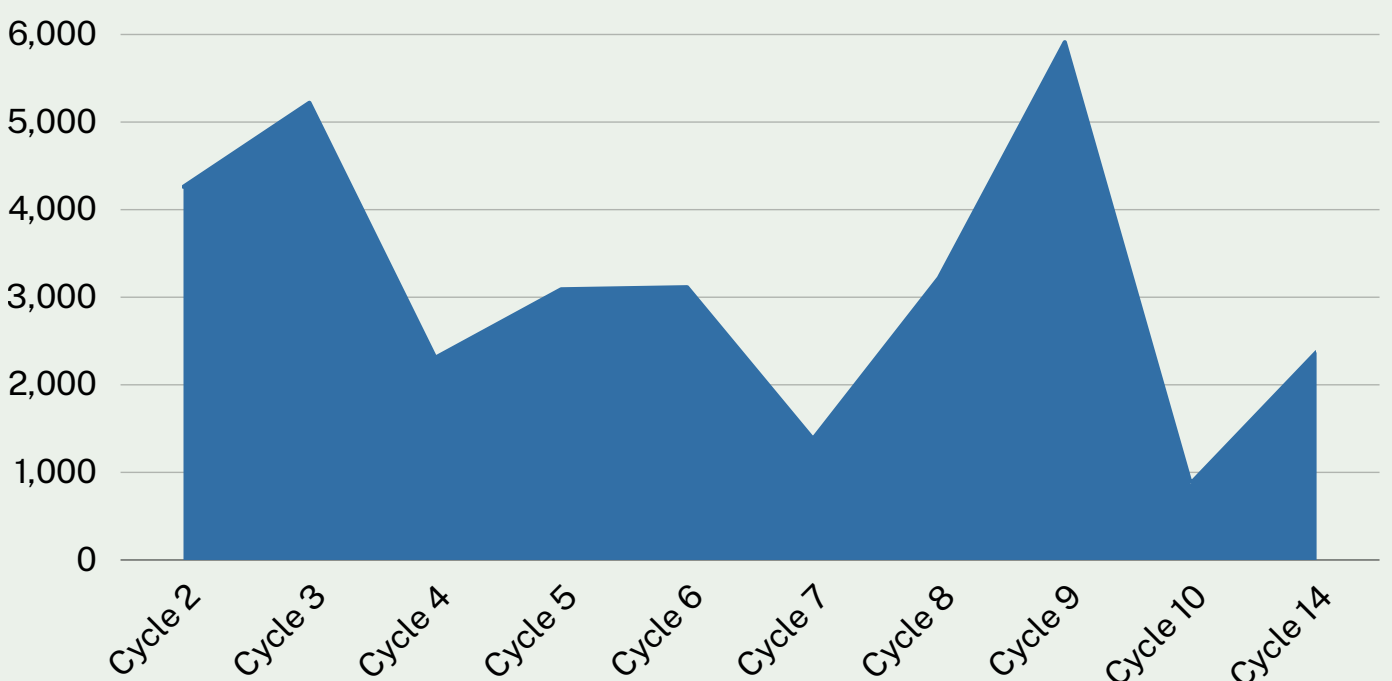
125 (1 Committed to Retain)

Physical space



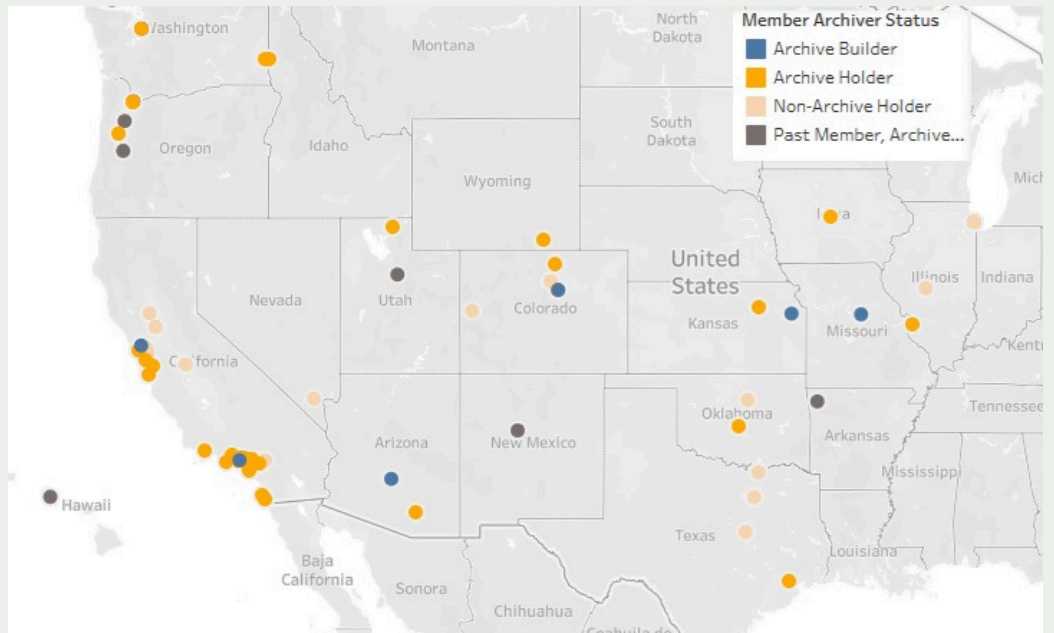
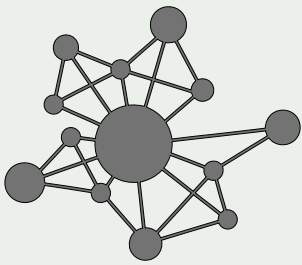
When WEST Archivers make commitments to retain materials, other WEST members can rest assured that those materials will be **available for the long-term**. They can then choose to deselect their local copy and instead **rely on the retained copy for access, freeing up library space for new materials or other uses**. WEST has developed special comparison tools in its custom in-house analysis and decision support system, AGUA, to streamline this work for members.

● WEST Square Feet Reclaimed



Preservation

WEST is one of the largest regional shared journal archiving programs in the U.S. in terms of the breadth of its membership and the number of titles and volumes it has archived to date. **WEST members have retained over 940,000 volumes from nearly 41,000 titles** covering a broad range of subjects and disciplines. The collections are held in **51 libraries and storage facilities across the western region of the U.S.**, with new collections added every year.



WEST leverages a home-grown collection analysis system, called AGUA, to conduct the group collections analysis. The WEST collections analysis sorts journals according to **risk categories** based on electronic availability. High risk materials undergo **physical validation** work and are stored in **secure, environmentally regulated facilities**. This guarantees the **integrity and completeness** of these collections. Through **member participation**, WEST continually **evaluates its selection and analysis criteria** in order to keep pace with the **dynamic landscape of shared print and archiving goals**.



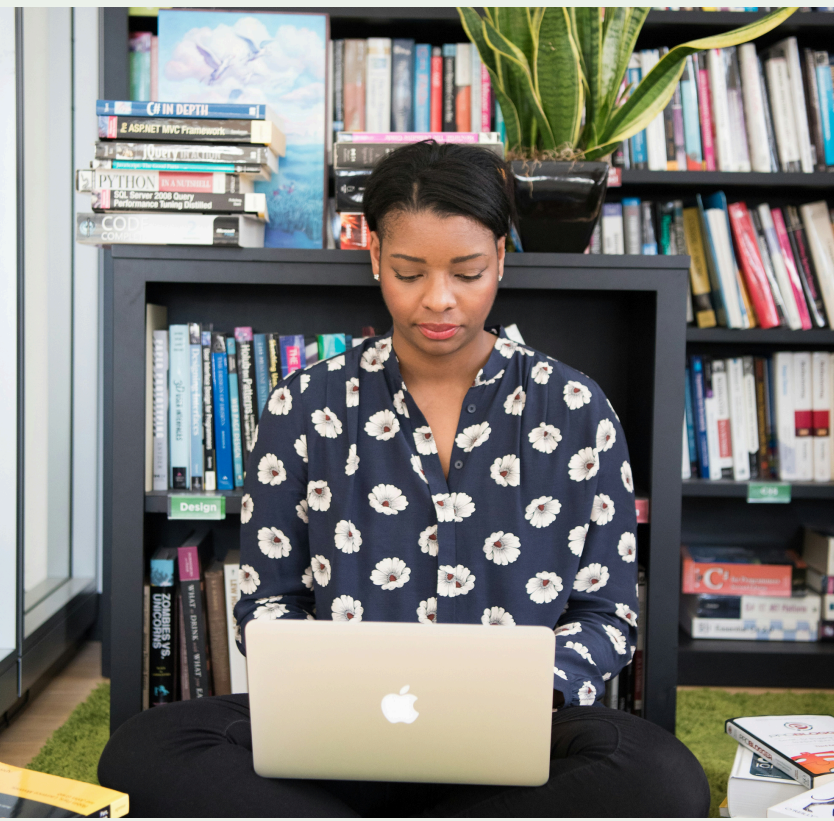
Risk Profile	Risk Level	Archiving Effort
Print & electronic full text in trusted digital repositories (e.g. CLOCKSS, Portico, JSTOR, HathiTrust Digital Library)	Low	Low
Print with selected full text access through databases	Medium	High
Print with electronic abstracting or indexing or no electronic coverage at all	High	High

Participation in WEST assures stakeholders that journal deselection projects operate within a **strategic decision-making framework**. WEST was a founding member of the Rosemont Shared Print Alliance, a federation of shared print programs which has now merged with the Partnership for Shared Book Collections to become the **Shared Print Partnership**, an organization that **amplifies and contextualizes WEST's work at the bi-national level** (US and Canada). Expanding the **network of institutions and programs collaborating together** to preserve and protect the scholarly record allows WEST to **strategically deploy program and member resources and broadens the collections for everyone**.



Access

When WEST Archivers agree to hold materials for the group, they also agree to make the retained materials available to members. **This guarantee supports continuity of access** to content for users, regardless of any decisions member institutions make about their local collections and whether the titles are available electronically.



WEST leverages **currently available resource sharing tools** (including an OCLC Profiled Group and a RapidILL pod) to connect members to the WEST archives. At the same time, WEST works to develop and advocate for **enhanced solutions to support end user discovery** of the critical materials held in the WEST archives.



[Libraries worldwide that own item:](#)
125 (1 Committed to Retain)

OCLC First Search Result

Title **Computer graphics marketplace.**
Imprint Phoenix, Ariz. : Oryx Press, 1-
Connect to
WEST Program Statement
WEST Archived title; Not available for immediate access. Request from InterLibrary Loan
Commitment displayed in the Archiver's catalog

Holdings: v.1(1989)-v.11(2002)
Committed to retain for the WEST Shared Print Program

WEST archived holdings discoverable via the local catalog

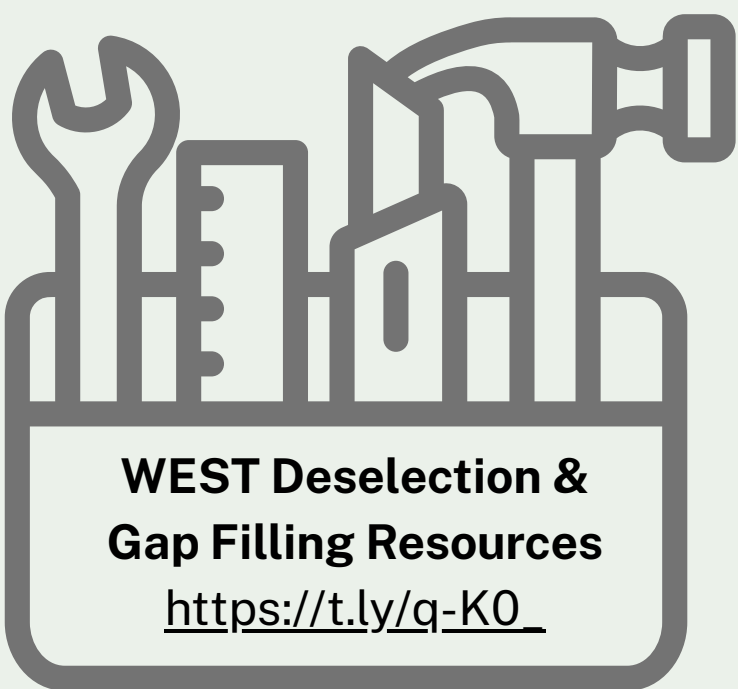
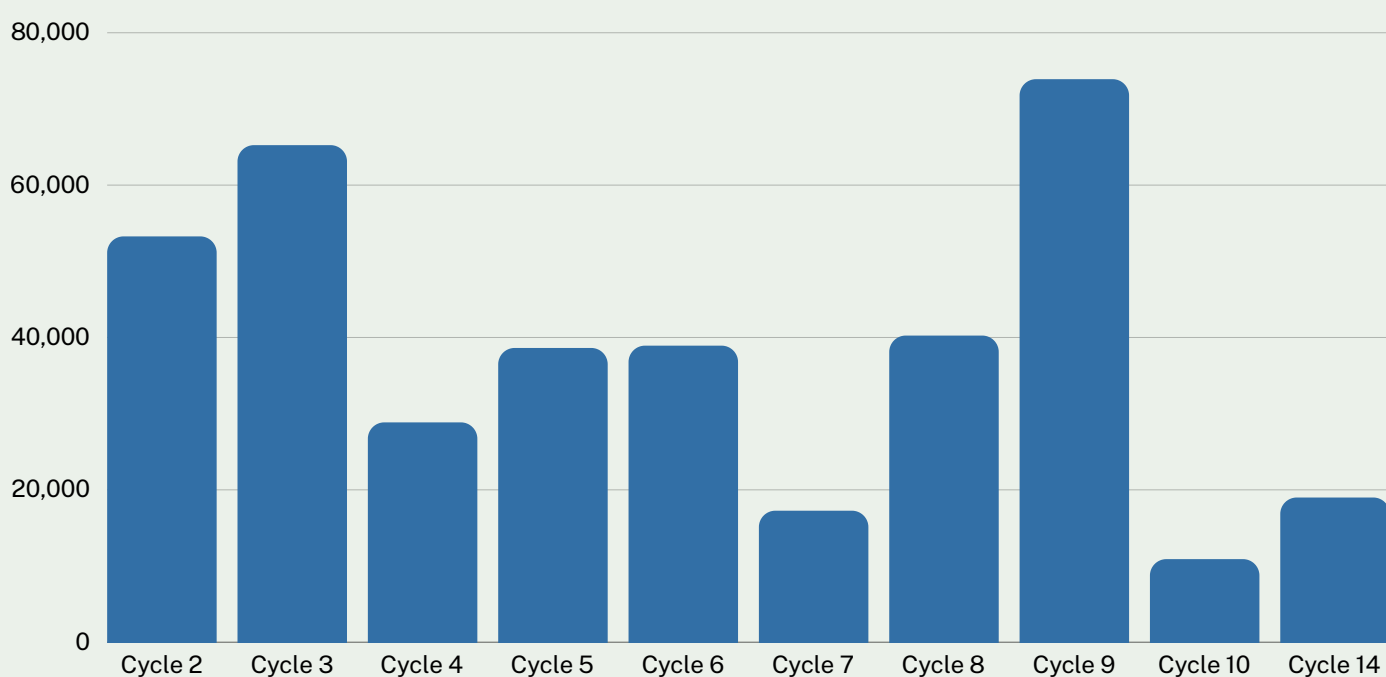
WEST's advocacy and development work approaches this topic from multiple angles. WEST has dedicated **in-house development time** to creating a simple solution that can be deployed in members' local systems as desired. WEST also prioritizes **broader advocacy for improved discovery of collective collections** through vendors and service providers. WEST partners with peer organizations to surface needs, find solutions, and advocate for improvements to the national shared print infrastructure.

Physical space



One of the major benefits WEST offers its members is access to **trusted archives of scholarly print journals**, which in turn is used as a **reference point to support local projects** to reduce the footprint of their on-campus print collections. These projects allow member institutions to **reallocate space** in their libraries to **support new collections** and other, non-collection **library and campus priorities**.

Volumes Deselected Against the WEST Archives



Members weigh several factors when making these decisions. Titles with **reliable electronic access** are typically preferred for **major space reclamation projects**. Titles with fewer electronic access points have historically seen lower rates of deselection, with libraries opting to keep these close at hand. As libraries grapple with managing the competing demands on their spaces, **shared print offers a path forward for reclaiming and repurposing space** while still **retaining access** to the materials students and scholars need.



WEST members have reported **deselecting over 386,000 volumes from titles archived by WEST**, but the true number is likely much higher. The library space reclaimed through these projects represent, new study spaces, new collections to support cutting-edge research, and new services to support user needs. WEST members have access to robust collection comparison tools through AGUA and other tools maintained by WEST's partners across the US.

